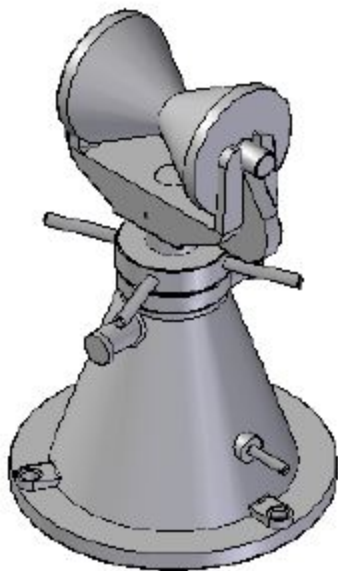


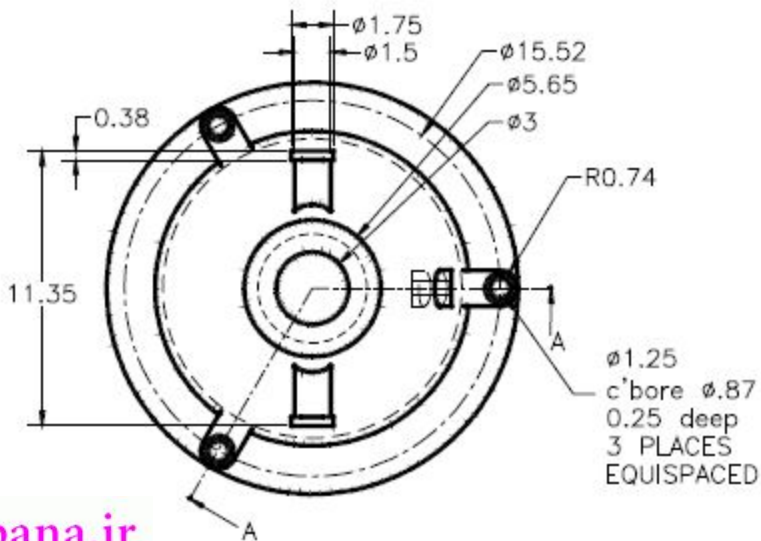
Stock Bracket Assembly

In this project, you will create the Stock Bracket assembly shown in Figure 1. The details of the components of the Stock Bracket assembly are shown in Figures 2 through 8.



دیپانا - دیپارتمان آموزش نرم افزار ایران

Figure 1 The Stock Bracket assembly



www.depana.ir

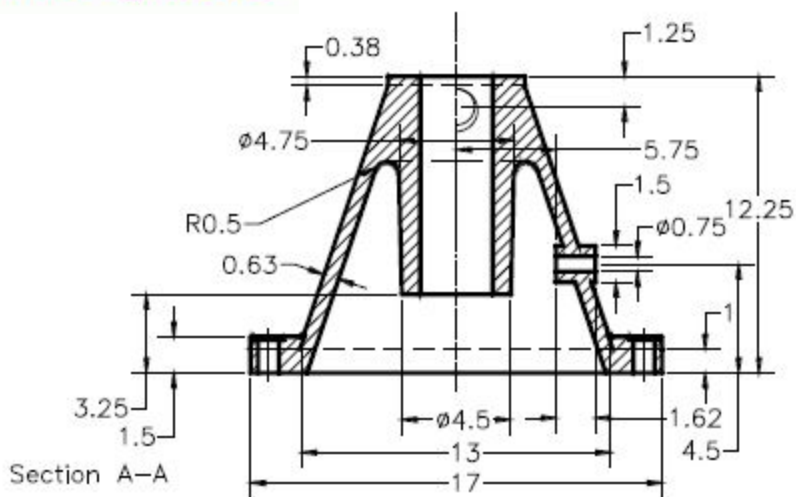


Figure 2 Top and front views of the Stock Support Base

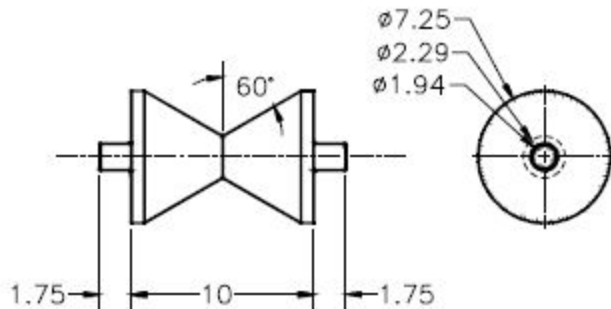


Figure 3 Front and right-side views of the Stock Support Roller

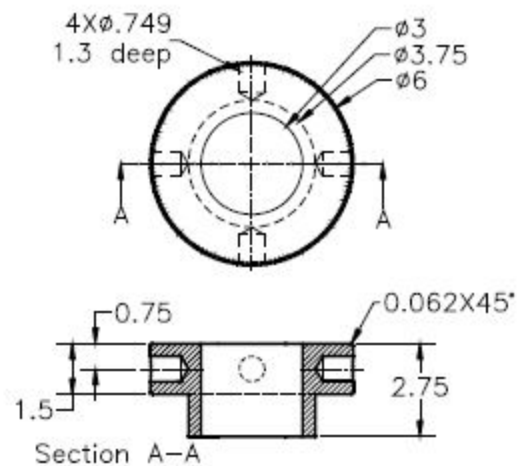


Figure 4 Top and front views of the Adjusting Screw Nut

دوره های آموزش حرفه ای و تسلط بر کتیا

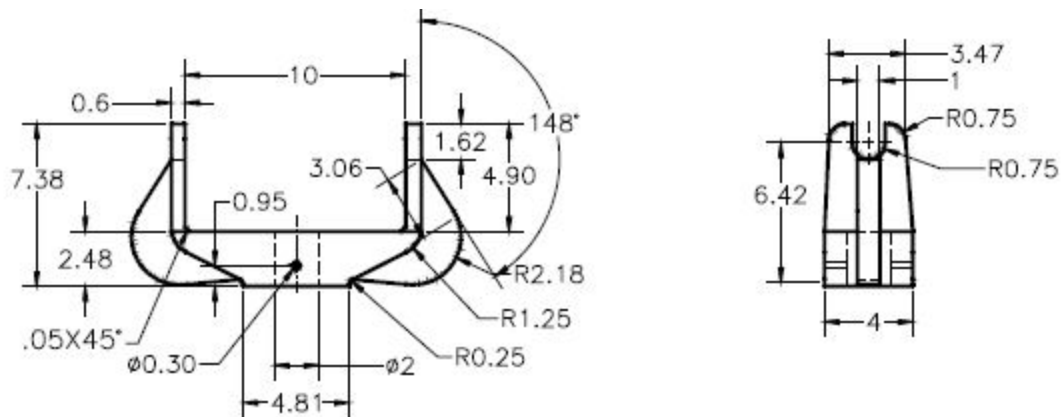


Figure 5 Front and right-side views of the Support Roller Bracket

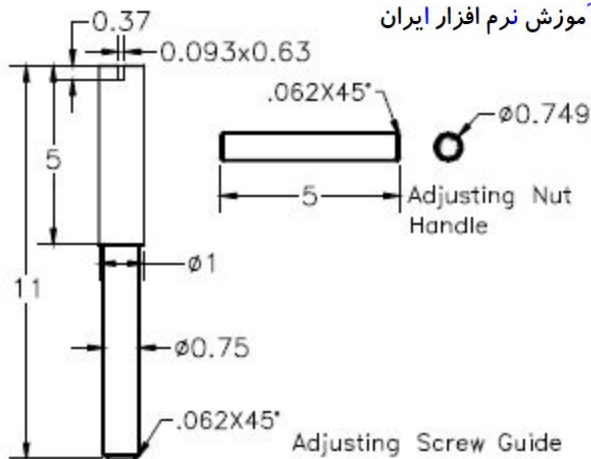


Figure 6 Views of the Adjusting Nut Handle and Adjusting Screw Guide

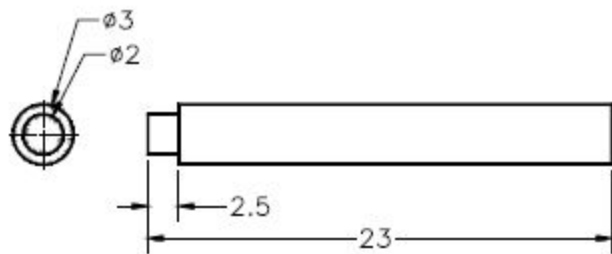


Figure 7 Views of the Support Adjusting Screw

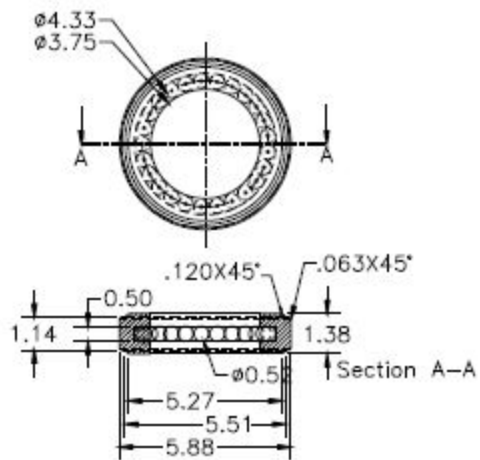


Figure 8 Top and front views of the Thrust Bearing